



LET'S GET BOTANICAL TOGETHER

THE DEREK JARMAN POCKET PARK AT  
MANCHESTER ART GALLERY



THE AIM OF THE PROJECT WAS TO CREATE A GREEN SHARED SPACE INSPIRED BY DEREK JARMAN'S GARDEN AT PROSPECT COTTAGE IN DUNGENESS AS A COLLABORATION BETWEEN PRIDE IN AGEING AT LGBT FOUNDATION AND MANCHESTER ART GALLERY. THE DEREK JARMAN POCKET PARK WILL BE INSTALLED AT THE END OF 2021, WHILST THE PROTEST! EXHIBITION IS AT THE ART GALLERY.

THE DEREK JARMAN POCKET PARK IS SUPPORTED BY THE MINISTRY OF HOUSING, COMMUNITIES AND LOCAL GOVERNMENT POCKET PARKS, PRIDE IN AGEING AT LGBT FOUNDATION, THE IGNITION PROJECT, ROYAL HORTICULTURAL SOCIETY, EXTERIOR ARCHITECTURE, THE POSTCODE LOTTERY TRUST, UNITED UTILITIES, GREATER MANCHESTER MENTAL HEALTH TRUST, MANCHESTER WELLBEING FUND, AND THE UNIVERSITY OF MANCHESTER.

## ACKNOWLEDGEMENTS

THE FIRST MASSIVE THANK YOU GOES TO THE FIVE PRIDE IN AGEING COMMUNITY MEMBERS WHO MADE THIS PROJECT POSSIBLE. LUCIANA LANG IS GRATEFUL TO DR ABIGAIL GILMORE'S MENTORING ON ALL MATTERS RELATED TO PARKS, TO PROFESSOR CHRIS PHILLIPSON FOR HIS GUIDANCE ON ALL MATTERS RELATED TO AGEING AND INEQUALITY, AND TO MEMBERS OF THE MUARG GROUP FOR FRUITFUL DISCUSSIONS ON CO-PRODUCTION METHODS.

ALL ARTWORK REPRODUCTIONS COURTESY AMANDA WILKINSON GALLERY/KEITH COLLINS WILL TRUST.

ALL PHOTOS WITHOUT CREDIT ARE BY MEMBERS OF THE COLLECTIVE.



The University of Manchester  
Institute for Collaborative  
Research on Ageing



Inspiring everyone to grow



Greater Manchester  
Mental Health  
NHS Foundation Trust



Ministry of Housing,  
Communities &  
Local Government



THE PRODUCTION OF THE ZINE WAS MADE POSSIBLE THANKS TO GENEROUS FUNDING FROM SOSS SMALL GRANTS INTERNAL COMPETITION AT THE UNIVERSITY OF MANCHESTER

FRONT COVER: QUEER, 1992, OIL ON CANVAS, COURTESY MANCHESTER ART GALLERY.



# LET'S GET BOTANICAL TOGETHER

## THE CO-CREATION OF A POCKET PARK INSPIRED BY DEREK JARMAN'S WORK AS GARDENER, ARTIST, AND ACTIVIST

MANCHESTER ART GALLERY AND PRIDE IN AGEING AT LGBT FOUNDATION HAVE BEEN WORKING IN PARTNERSHIP TO CREATE A DEREK JARMAN POCKET PARK AT THE MOSLEY STREET ENTRANCE OF MANCHESTER ART GALLERY. THIS NEW COMMUNITY GARDEN SPACE HAS BEEN DESIGNED AND PLANTED BY A VOLUNTEER GROUP OF GREEN-FINGERED LGBT+ OVER 50S FROM GREATER MANCHESTER, WITH SUPPORT FROM ARTIST JULIE DAVIS-DUFAYARD. AS WELL AS PROVIDING A FUNCTIONAL SPACE FOR MANCHESTER ART GALLERY'S CLIMATE AND WELLBEING WORK THE GARDEN WILL BE A PLACE FOR THE PEOPLE OF MANCHESTER AND THE WIDER WORLD TO COME TOGETHER, RELAX, SHARE IDEAS AND ENJOY A TASTE OF "IMMERSIVE NATURE" IN THE CENTRE OF THE CITY. GARDEN DESIGN SUPPORT HAS BEEN KINDLY PROVIDED BY EXTERIOR ARCHITECTURE, ROYAL HORTICULTURAL SOCIETY, UNITED UTILITIES AND AWARD WINNING GARDEN DESIGNER LEON DAVIS, AND THE GARDEN WILL CONTAIN A NUMBER OF INNOVATIVE URBAN SOLUTIONS TO COMBAT THE EFFECTS OF CLIMATE CHANGE.

THE PLANTING IN THE DEREK JARMAN POCKET PARK IS INSPIRED BY FILMMAKER, GAY RIGHTS ACTIVIST AND GARDENER DEREK JARMAN'S CELEBRATED GARDEN IN DUNGENESS AS WELL AS THE LIFE EXPERIENCES OF OUR LGBT+ VOLUNTEER GROUP, WHO ARE OF THE SAME OR SIMILAR GENERATIONS TO JARMAN. ALMOST 30 YEARS ON FROM JARMAN'S LANDMARK 'QUEER' EXHIBITION AT MANCHESTER ART GALLERY, THIS VOLUNTEER GROUP CONTINUE TO BE INSPIRED BY THE MESSAGES AND MOVEMENTS FOR LGBT+ EQUALITY WHICH JARMAN AND OTHERS STARTED IN THE 1980S, AND ARE SUPPORTING LGBT FOUNDATION TO CONTINUE THEIR WORK TOWARDS A FAIR AND EQUAL SOCIETY WHERE ALL LGBT+ PEOPLE CAN ACHIEVE THEIR FULL POTENTIAL. THIS ZINE DRAWS ON THE WORK OF THE COLLECTIVE TO TELL THE STORY OF THE CO-CREATION OF A GARDEN SPACE WHICH GREW OUT OF THE WIDER 'DEREK JARMAN PROTEST! PROJECT.'

IN THE WORDS OF MEMBERS OF THE VOLUNTEER GROUP...LGBT+ OVER 50S

**LET'S GET BOTANICAL TOGETHER!**





## THE PEOPLE

- DEREK JARMAN, THE SOURCE OF INSPIRATION
- PHILIP, MINDY, DAVID, HAZEL, AND PAUL: THE STORYTELLERS
- LAWRIE, THE VISIONER
- FIONA, THE CURATOR
- JULIET, THE ARTIST
- ROSIE, THE HORTICULTURALIST
- JONNY AND SOPHIE, THE ARCHITECTS
- LUCIANA, THE ETHNOGRAPHER

## THE STORY

WE'VE COME TOGETHER AS A COLLECTIVE OF GREATER MANCHESTER'S OVER 50s LGBT+ COMMUNITIES, A BUNCH OF KNOWLEDGEABLE, AND NOT SO KNOWLEDGEABLE, AMATEUR GARDENERS, AND A GROUP OF PEOPLE WHO ALL SHARE A PASSION FOR THE BEAUTY AND POWER OF GARDENS, PLANTS AND NATURE. AND WE'RE VERY EXCITED TO BE WORKING WITH PRIDE IN AGEING AT LGBT FOUNDATION, MANCHESTER ART GALLERY, EXTERIOR ARCHITECTURE, RHS IGNITION PROJECT AND ARTIST JULIET DAVIS-DRUFAYARD TO PLAN AND CREATE A JARMAN-INSPIRED GARDEN IN THIS SPACE, WHICH EVERYONE WILL BE WELCOME TO USE.

Philip and Mindy preparing the garden space with some much needed weeding!



"TRUE LOVE FOREVER"- DEREK JARMAN



Derek Jarman's Garden, 1995



## THE SETTING

SOME OF YOU MAY RECOGNISE THIS STRIP OF LAND IN MANCHESTER CITY CENTRE – THE STONE FLAGS, VICTORIAN IRON FENCING, A BACKGROUND OF OFFICE BLOCKS AND A GLIMPSE TO THE RIGHT OF A GRADE I LISTED BUILDING. IT'S A SMALL PART OF THE LAND SURROUNDING MANCHESTER ART GALLERY. MOST OF US HAVE PROBABLY GIVEN IT LITTLE THOUGHT AS WE WALK DOWN MOSLEY STREET, BUT FOR A SMALL GROUP OF US, IT HAS BEEN THE SUBJECT OF MANY ZOOM MEETINGS OVER THE PAST 10 MONTHS.



OUR GROUP INCLUDES FIVE PRIDE IN AGEING LGBT FOUNDATION VOLUNTEERS, LGBT FOUNDATION'S PRIDE IN AGEING MANAGER, A GALLERY CURATOR, AN ARTIST AND AN ANTHROPOLOGIST! WHY? WHAT'S THIS ALL ABOUT?






**THE PROTEST!** EXHIBITION WILL FOCUS ON THE DIVERSE STRANDS OF JARMAN'S PRACTICE AS A PAINTER, FILM-MAKER, SET-DESIGNER, POLITICAL ACTIVIST AND... .. **GARDENER.**

IMAGINE A WILD AND WINDSWEEP CORNER OF THE BRITISH COASTLINE, A HEADLAND OF PEBBLES AND SHINGLE, BLASTED BY THE SUN IN SUMMER AND BATTERED BY WINTER STORMS AND SALT SPRAY, AND ALL WITHIN THE SHADOW OF A NUCLEAR POWER STATION.

NOT EXACTLY A PLACE THAT CONJURES UP THE BEAUTY OF NATURE, AND YET FOR ARTIST, FILM MAKER AND GAY ACTIVIST DEREK JARMAN, THE GARDEN HE CREATED AT PROSPECT COTTAGE IN DUNGENESS, KENT, WAS BOTH A 'THERAPY AND A PHARMACOPOEIA'.

ALMOST 30 YEARS ON FROM JARMAN'S LANDMARK EXHIBITION 'QUEER' AT MANCHESTER ART GALLERY, THE GROUP OF VOLUNTEER GARDENERS, MANY OF WHOM ALSO CAMPAIGNED FOR GAY RIGHTS AND AGAINST HOMOPHOBIC POLICIES AND ATTITUDES, CONTINUE TO BE INSPIRED BY THE MESSAGES AND MOVEMENTS FOR LGBT+ EQUALITY WHICH JARMAN AND OTHERS STARTED IN THE 1980s.



DUNGENESS, DUNGENESS, YOUR BEAUTY IS THE BEST, FORGET THE HILLS AND VALLEYS. THIS LANDSCAPE IS LIKE THE FACE YOU OVERLOOK, THE FACE OF AN ANGEL WITH A NAUGHTY SMILE  
- DEREK JARMAN, GARDEN, 1995



# KEY PRINCIPLES FOR DEREK JARMAN POCKET PARK AT MANCHESTER ART GALLERY - BY THE COLLECTIVE

1. RADICAL AND STRIKING SPACE, WHICH STIMULATES ALL LIFE FORMS THROUGHOUT THE YEAR.

IN PRACTICE: YEAR ROUND PLANTING FOR INTEREST/ROTATING PLANTS; STRUCTURAL PLANTS OF DIFFERENT HEIGHTS, SO YOU CAN SEE THEM THROUGH RAILINGS AND DIFFERENT VIEWS.

2. CELEBRATES DIFFERENCES AND RESILIENCE, LIFE STORIES OF JARMAN, HIS PEERS, AND ALSO LOCAL STORIES. OFFERS A WINDOW INTO DIFFERENT LGBT LIFE EXPERIENCES. INSPIRES PEOPLE.

IN PRACTICE: STORIES AND ENGAGEMENT WITH DIFFERENT GENERATIONS. PARALLEL DRAWN BETWEEN HIV/AIDS HISTORICALLY AND AREA TO COMMEMORATE THOSE WHO HAVE BEEN AFFECTED.

3. A MULTI-SENSORY JOURNEY THROUGH THE GARDEN, WITH FOCUS ON ACCESSIBILITY

IN PRACTICE: COLOUR. SCENT. TEXTURE. SHINGLES. SOUNDSCAPES. COTTAGE/SHELTER AS A FINAL DESTINATION.

4. BRINGING THE EXHIBITION TO THE POCKET PARK, SYMBOLICALLY, COMBINES NATURE, ART, TEXT AND WORDS (SPOKEN OR WRITTEN)

IN PRACTICE: A SENSE OF JARMAN THROUGH THE GARDEN.

5. SPACE FOR REFLECTION AND REVELATION

IN PRACTICE: REFLECT (USE OF MIRRORS TO REFLECT WHAT IS IN THE GARDEN) & REVELATION (WHAT IS HIDDEN).

6. INSPIRES PEOPLE TO GARDEN AND TAKE ACTION FOR CLIMATE JUSTICE.

IN PRACTICE: SHARING GARDENING & ACTIVIST KNOWLEDGE. BUILDING IN SUSTAINABILITY. CONSERVE WATER CONSUMPTION, SEEDED ROOF ON SHELTER AND PLANTING TO ENCOURAGE BIODIVERSITY

ZOOM ACTIVITY BY THE ARTIST  
JULIET: WHEN EVERYONE HAS  
READ THEIR PRINCIPLES, WE ALL  
VOTE USING DEMOCRACY: WE  
EACH GET A CERTAIN NUMBER  
OF 'DOTS' (COULD BE 3 OR  
5 'X' CROSSES) AND WE EACH  
ANONYMOUSLY TYPE A CROSS  
NEXT TO OUR TOP CHOICES. IF  
YOU ONLY HAVE ONE TOP CHOICE  
YOU CAN TYPE ALL YOUR CROSSES  
NEXT TO THAT ONE.

ONCE EVERYONE HAS VOTED WE  
COUNT WHICH PRINCIPLES HAVE  
THE MOST VOTES, THESE ARE THE  
ONES WE KEEP.



## DUNGENESS...



View from Prospect Cottage, Dungeness. Courtesy Howard Sooley



# DEREK JARMAN- THE ARTIST, WRITER AND FILM-MAKER

WE HAVE SOUGHT  
EQUIVALENCE IN DESIGNING  
A GARDEN IN AN OSTENSIBLY  
ADVERSE ENVIRONMENT.  
HOW CREATIVITY THRIVES IN  
THE MARGINAL SPACES...FOR  
ME THIS IS AN ASPECT OF  
ABSTRACTION IN ART.- MINDY



View from Prospect Cottage, Dungeness. Public Domain

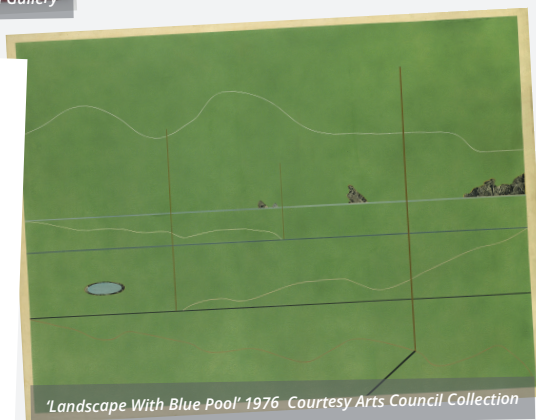


Prospect, 1991, oil on canvas, Courtesy Amanda Wilkinson Gallery

DEEP RED SUN CLIMBING FROM A  
STILL SEA, THE WET SHINGLE ABLAZE  
WITH REFLECTIONS. WALKED  
INTO THE GARDEN FLOATING ON  
A SEA OF PEARLS. THE GARDEN  
CASTS MYSTERIOUS SHADOWS.  
NOT A BREATH OF WIND. -DEREK  
JARMAN, MODERN NATURE, 1991

PLEASE READ THE CARES OF THE WORLD  
I HAVE LOCKED IN THESE PAGES: AND  
AFTER PUT THIS BOOK ASIDE AND LOVE.  
MAY YOU OF A BETTER FUTURE, LOVE  
WITHOUT A CARE AND REMEMBER WE  
LOVED TOO.

AS THE SHADOWS CLOSE IN, THE STARS  
COME OUT. -EXTRACT FROM SMILING IN  
SLOW MOTION - DEREK JARMAN, AT  
YOUR OWN RISK: A SAINT'S TESTAMENT,  
1992



'Landscape With Blue Pool' 1976 Courtesy Arts Council Collection





THIS IS LIKE HE WAS REFLECTING UPON HIS LIFE, AND INEVITABILITY OF BEING DIAGNOSED WITH AN AIDS RELATED DISEASE. HE LIKE I HAD AN UNCERTAIN FUTURE. HIV DIDN'T DISCRIMINATE, THE INEVITABILITY OF SURVIVAL OR DEATH UNKNOWN. IT MADE ME THINK AND REMEMBER LIFE BACK IN THE 90'S. IN PUTTING THESE THOUGHTS ASIDE. I TOO WAS ABLE TO BUILD A BETTER FUTURE, BUT MORE IMPORTANTLY TO LOVE AND BE LOVED. I AM A SURVIVOR. - PHILIP

PARADISE HAUNTS GARDENS, AND SOME GARDENS ARE PARADISES. MINE IS ONE OF THEM. OTHERS ARE LIKE BAD CHILDREN - SPOILT BY THEIR PARENTS, OVER-WATERED AND COVERED WITH NOXIOUS CHEMICALS. -DEREK JARMAN'S GARDEN, 1995

ALWAYS BECOMING, NEVER ARRIVING. LIFE IS AT A STANDSTILL - ONLY IDEAS FLASH PAST. IN SUCH CONFUSION I FIND MYSELF RUNNING AFTER THEM: HEY! STOP! STOP! BUT THEY ESCAPE, LEAVING ME STARING AT A GREY ENGLISH SPRING. - DEREK JARMAN, MODERN NATURE, 1991

A SEA MIST SHIMMERS IN THE DAWN. STILL AIR. DEW SPARKLES ON THE SHINGLE. A SOLITARY MAGPIE PERCHED IN THE DRIFTWOOD. - DEREK JARMAN, MODERN NATURE, 1991



# DEREK JARMAN THE ACTIVIST

JARMAN -1942-1994 WAS AND IS AN IMPORTANT PART OF LGBT+ HISTORY IN THE UK, SPEAKING OUT PUBLICLY FOR GAY RIGHTS AND FIGHTING HOMOPHOBIA THROUGHOUT HIS LIFE. ALONG WITH MANY OTHER GAY MEN IN THE 1980S & 90S, JARMAN WAS DIAGNOSED HIV POSITIVE AND DIED FROM AN AIDS-RELATED ILLNESS AT THE AGE OF 52.



Photo: Stephen Mayes.  
Courtesy of OutRage!



Derek and Keith from *Smiling in Slow Motion*, 2001

FOUR TIMES IN 1988 WE BROKE THE RECORD FOR EUROPE'S LARGEST DEMONSTRATION 12,000;15000;20,000;25,000. WE LEARNT WHO OUR TRUE ALLIES WERE, AND OUR FAIR-WEATHER FRIENDS. THE LABOUR PARTY DESERTED US AT THE FIRST HURDLE, THE GUARDIAN TOLD US THAT CLAUSE 28 WAS OUR OWN FAULT. THE CLAUSE BECAME LAW-PLAYS BANNED, EXHIBITIONS STOPPED, TEACHERS SILENCED. BUT FOR WHAT? HAPPY CHRISTMAS MARGARET. -DEREK JARMAN, AT YOUR OWN RISK: A SAINT'S TESTAMENT, 1992

New Year day how and aw.  
Sarah are off to London. me  
play doing well in Brussels

Birthday fireworks  
HB true love.

AS A POSITIVE ELDER THIS IS QUITE POIGNANT TO ME. - PHILIP



## TIMELINE OF DEREK JARMAN'S LIFE AND WORK

### 1942

MICHAEL DEREK ELWORTHY JARMAN  
BORN IN NORTHWOOD, MIDDLESEX ON 31  
JANUARY.

### 1946

JARMAN GIFTED THE BOOK BEAUTIFUL  
FLOWERS AND HOW TO GROW THEM BY HIS  
PARENTS, BEGINNING HIS LIFE-LONG LOVE  
OF GARDENS



1968, "ballet for small spaces" courtesy of the Keith  
Collins Will Trust - Amanda Wilkins

### FROM 1942 - 1950

THE JARMAN FAMILY LIVE IN ENGLAND,  
PAKISTAN AND ITALY, MOVING FOR  
JARMAN'S FATHER'S WORK AS A SERVING  
RAF OFFICER.

## TIMELINE OF LGBT HISTORY IN MANCHESTER

### EARLY 1940S

THE UNION PUB, NOW THE NEW UNION,  
PLAYS HOST TO DRAG SHOWS DURING  
WORLD WAR II. THEY WERE POPULAR WITH  
AMERICAN TROOPS STATIONED NEARBY.

### 1952

ALAN TURING IS PROSECUTED FOR BEING IN  
A RELATIONSHIP WITH ANOTHER MAN. HE  
DIES BY SUICIDE IN 1954.

### 1960s

MANCHESTER'S GAY SCENE IS BASED IN  
AN AREA BETWEEN ALBERT SQUARE AND  
DEANSGATE WITH PUBS SUCH AS THE  
ROCKINGHAM AND ROUGE BEING POPULAR  
ALTHOUGH THE UNION CONTINUES TO BE  
FREQUENTED BY THE GAY COMMUNITY.

### 1964

THE NORTH WEST HOMOSEXUAL LAW  
REFORM COMMITTEE IS FOUNDED BY  
LABOUR COUNCILLOR ALLAN HORSFALL. THE  
FIRST MEETING IS HELD IN MANCHESTER.

### 1967

SUMMER OF LOVE. HOMOSEXUALITY  
DECRIMINALISED IN ENGLAND FOR  
CONSENTING ADULTS OVER 21.



## 1951

JARMAN WHIPPED AND SHAMED AT HORDLE HOUSE FOR CUDDLING IN BED WITH HIS FRIEND GAVIN, 'SOWING TERRIBLE SEEDS OF DOUBT AND SELF-HATE'.

## 1955-60

JARMAN BEGINS GARDENING WITH CACTI IN THE GARDEN AT NORTHWOOD. YVES KLEIN PRESENTS HIS WORK: AN EMPTY WHITE ROOM ENTERED THROUGH A BLUE CURTAIN.

## 1963

HAVING COMPLETED HIS DEGREE IN ENGLISH AND HISTORY AT KING'S COLLEGE, JARMAN STARTED AT SLADE, STUDYING PAINTING AND SET DESIGN.

## 1967

IMMEDIATELY AFTER FINISHING AT SLADE, JARMAN EXHIBITS WIDELY IN LONDON, LIVERPOOL AND PARIS.

## 1970

DESIGNS THE SETS FOR KEN RUSSELL'S THE DEVILS, SHOT AT PINWOOD STUDIOS.

## 1972

PUBLISHES POETRY COLLECTION A FINGER IN THE FISHES MOUTH

BEGINS PROLIFIC PRODUCTION OF SUPER8 FILMS. DESIGNS SETS AND PRODUCES PAINTINGS AND FURNITURE FOR KEN RUSSEL'S FILM SAVAGE MESSIAH.

## 1973

THE MANCHESTER GAY ALLIANCE IS FORMED BY THE UNIVERSITY'S LESBIAN & GAY SOCIETY, CHE, A LESBIAN GROUP AND TRANSVESTITE / TRANSEXUAL GROUP.

## 1975

2 JANUARY – THE MANCHESTER GAY ALLIANCE OPENS THE MANCHESTER GAY SWITCHBOARD TO PROVIDE SUPPORT AND INFORMATION TO CALLERS. IT ORIGINALLY OPERATED IN THE BASEMENT OF THE UNIVERSITY OF MANCHESTER. BY 1990, THE SWITCHBOARD TEAMED UP WITH THE LESBIAN LINK HELPLINE TO FORM THE MANCHESTER LESBIAN AND GAY SWITCHBOARD.



## 1978

THE FIRST EDITION OF THE MANCUNIAN GAY MAGAZINE IS PUBLISHED.

## 1979

MARGARET THATCHER ELECTED PRIME MINISTER.



## 1976

RELEASES FIRST FEATURE FILM, *SEBASTIANE*, IN SARDINIA. A QUEER RETELLING OF THE MARTYRDOM OF ST. SEBASTIAN, THE FILM IS NOTABLE FOR ITS HOMO-EROTICISM AND ENTIRELY LATIN DIALOGUE.

## 1977

MAKES BRITAIN'S 'FIRST PUNK FILM' JUBILEE. FEATURING ELIZABETH I TIME-TRAVELLING TO 70S BRITAIN. MAKES MUSIC VIDEO FOR SEX PISTOLS.

## 1979

MAKES *THE TEMPEST*, A RETELLING OF SHAKESPEARE'S PLAY. MAKES *BROKEN ENGLISH* SUITE OF 3 MUSIC VIDEOS FOR MARIANNE FAITHFUL.

## 1986

NOMINATED FOR THE TURNER PRIZE FOR HIS CONTRIBUTION TO FILM. MAKES *CARAVAGGIO*. MEETS KEITH COLLINS, JARMAN'S COMPANION UNTIL HIS DEATH. IN DECEMBER, JARMAN IS DIAGNOSED AS HIV-POSITIVE.

## 1987

BUYS PROSPECT COTTAGE WITH HIS INHERITANCE FROM HIS FATHER. DIRECTS VIDEO FOR PET SHOP BOYS *IT'S A SIN*. MAKES *LAST OF ENGLAND*.

## 1988

BEGINS WORKING EXTENSIVELY FOR RIGHTS FOR GAY PEOPLE AND AIDS SUFFERERS.

## 1984

MANCHESTER CITY COUNCIL FORMS THE EQUAL OPPORTUNITIES COMMITTEE.

## 1985

MANCHESTER PRIDE IS BORN FOLLOWING A £1,700 GRANT FROM THE MANCHESTER CITY COUNCIL TO PUT ON A TWO-WEEK CELEBRATION, COMPLETE WITH A HUGE BANNER ADORNING OXFORD STREET.

## 1986

EUROPE'S FIRST PURPOSE-BUILT GAY CENTRE BUILT IN MANCHESTER.



'Landscape' 1991

## 1988

SECTION 28, PASSED INTO LAW PROHIBITING LOCAL AUTHORITIES AND SCHOOLS FROM "PROMOTING" HOMOSEXUALITY AND PREVENTED COUNCILS FROM FUNDING MUCH-NEEDED LESBIAN AND GAY INITIATIVES AT A TIME WHEN GAY PEOPLE WERE STRUGGLING TO COPE WITH THE AIDS EPIDEMIC.

A HUGE ANTI-SECTION 28 PROTEST IS HELD IN MANCHESTER.



1989

MAKES WAR REQUIEM.

1990

MAKES THE GARDEN.

1991

PUBLISHES MODERN NATURE. CANONISED AS ST. DEREK OF DUNGENESS BY THE SISTERS OF PERPETUAL INDULGENCE. MAKES EDWARD II.

1992

PUBLISHES AT YOUR OWN RISK. QUEER, AN EXHIBITION OF NEW PAINTINGS INCLUDING LARGE 'SLOGAN' WORKS AT MANCHESTER ART GALLERY.

1993

MAKES WITTGENSTEIN. MAKES HIS LAST FEATURE FILM BLUE. DIRECTS MUSIC VIDEOS FOR SUEDE, PET SHOP BOYS AND PATTI SMITH.

1994

RELEASES CHROMA. EVIL QUEEN: THE LAST PAINTINGS EXHIBITION AT WHITWORTH ART GALLERY, MANCHESTER.

JARMAN DIES OF AIDS-RELATED COMPLICATIONS ON 19 FEBRUARY AFTER A LONG ILLNESS

1995

PUBLICATION OF DEREK JARMAN'S GARDEN, WITH PHOTOGRAPHS BY HOWARD SOOLEY.

1989

THE NORTHWEST CAMPAIGN FOR LESBIAN & GAY EQUALITY ORGANISES MANCHESTER'S "CELEBRATION OF GAY AND LESBIAN DIVERSITY".

1990

THE ALBERT KENNEDY TRUST OPENS IN MANCHESTER TO SUPPORT YOUNG HOMELESS LGBT+ PEOPLE.

1992

FAMILIES AND FRIENDS OF LESBIANS AND GAYS IS LAUNCHED.

1994

HEALTHY GAY MANCHESTER IS FORMED; BIPHORIA IS LAUNCHED.

1995

THE UK'S FIRST CONFERENCE ON POLICING LGBT+ COMMUNITIES "POLICE AND DIVERSITY: AN AGENDA FOR CHANGE" IS HOSTED BY THE GREATER MANCHESTER LESBIAN AND GAY POLICING INITIATIVE AT MANCHESTER TOWN HALL.



*Journey to Avebury', 1971, still from Super8 film, courtesy LUMA Foundation*



1996

RETROSPECTIVE EXHIBITION AT THE  
BARBICAN, LONDON.

2000

PUBLICATION OF DEREK JARMAN'S *SMILING  
IN SLOW MOTION: DIARIES, 1991 - 94*,  
VINTAGE BOOKS.

2008

DEREK JARMAN: *BRUTAL BEAUTY*, CURATED  
BY ISAAC JULIEN AT THE SERPENTINE  
GALLERY, LONDON

EXHIBITION *LIGHTBOX: DEREK JARMAN*,  
TATE BRITAIN, LONDON

THE JARMAN AWARD IS ESTABLISHED TO  
RECOGNISE AND SUPPORT ARTISTS WORKING  
WITH MOVING IMAGE.

2013

EXHIBITION *BLACK PAINTINGS AND  
WAITING FOR GODOT*, WILKINSON  
GALLERY, LONDON

2014

EXHIBITION *PANDEMONIUM DEREK  
JARMAN*, KING'S CULTURAL INSTITUTE,  
LONDON

2016

EXHIBITION *PURE ROMANCE: ART AND  
THE ROMANTIC SENSIBILITY*, THE REDFERN  
GALLERY, LONDON

1996

THE FIRST POPTASTIC CLUB NIGHT TAKES  
PLACE IN MANCHESTER.

MANCHESTER PRAIRIE DOGS LINE DANCING  
GROUP DANCED OUTSIDE THE REMBRANDT  
FOR THE FIRST TIME AT THE MARDI GRAS

1998

THE BOLTON 7 ARE CONVICTED OF GROSS  
INDECENCY.

MANCHESTER'S GAY AND INCLUSIVE RUGBY  
UNION TEAM MANCHESTER VILLAGE  
SPARTANS IS FORMED.

1999

23 FEBRUARY - THE FIRST EPISODE  
OF *QUEER AS FOLK*, A DRAMA SERIES  
BASED ON MANCHESTER'S GAY SCENE, IS  
BROADCAST ON CHANNEL 4.

2003

MANCHESTER HOSTS EUROPRIDE. IT WAS  
ANNOUNCED THAT THE EVENT WOULD NOW  
BE KNOWN AS "MANCHESTER PRIDE".

2004

GENDER RECOGNITION ACT INTRODUCED

2005

MANCHESTER'S GAY AND INCLUSIVE  
FOOTBALL TEAM VILLAGE MANCHESTER  
JOINS THE GFSN NATIONAL LEAGUE.

2012

1-3 JUNE - MANCHESTER HOSTS THE



## 2017

EXHIBITION THE LAST OF ENGLAND,  
WILKINSON GALLERY, LONDON

DEREK JARMAN: BLUE, TATE BRITAIN,  
LONDON

## 2018

EXHIBITION BLUE AND EDN, WHITECHAPEL  
GALLERY, LONDON

PROSPECT COTTAGE WAS PUT UP FOR SALE  
AFTER KEITH COLLINS' DEATH.



Self-portrait, Oil on canvas, 1959, Private collection

## 2019

LAUNCH OF EXHIBITION PROTEST!,  
IMMA, DUBLIN, IRELAND

ENGLISH HERITAGE UNVEILED A BLUE  
PLAQUE COMMEMORATING JARMAN AT HIS  
FORMER RESIDENCE AT BUTLERS WHARF  
BUILDING, 36 SHAD THAMES, LONDON.

## 2020

ART FUND LAUNCHED A CAMPAIGN TO RAISE  
MONEY FOR PROSPECT COTTAGE.

BINGHAM CUP, AN INTERNATIONAL RUGBY  
UNION TOURNAMENT FEATURING GAY RUGBY  
UNION TEAMS FROM ACROSS THE WORLD.

## 2010

EQUALITY ACT INTRODUCED.

## 2013

MARRIAGE (SAME SEX COUPLES) ACT 2013  
PASSED.

RAINBOW NOIR, A SOCIAL AND PEER  
SUPPORT GROUP FOR LGBTAI PEOPLE OF  
COLOUR ESTABLISHED.

## 2016

CARL RUSTIN-BEHAN BECOMES  
MANCHESTER'S FIRST OPENLY GAY LORD  
MAYOR.

## 2017

UK ISSUES POSTHUMOUS PARDONS FOR  
THOUSANDS OF GAY AND BI MEN

## 2019

PRIDE IN AGEING IS LAUNCHED AT LGBT  
FOUNDATION.

## 2021

BEV CRAIG APPOINTED AS LEADER OF  
MANCHESTER CITY COUNCIL. THE CITY'S  
FIRST FEMALE LGBT+ LEADER

MANY THANKS TO OUT IN THE CITY FOR THE  
USE OF SOME EXTRACTS IN THE TIMELINE.





1984, building work on our lovely lesbian house in Hull.- Mindy

## MANCHESTER AND BEING LGBT+ IN THE 1980S

NOWADAYS WE ARE LARGELY COMMONPLACE, AS ORDINARY AND NORMAL AS ANYBODY ELSE, WHICH ISN'T THE SAME. WHEN WE HAD THAT THING OF SPECIAL PLACES TO GO TO, AND NOBODY ELSE WANTED TO GO TO: THE MONDAY NIGHT LESBIAN LINE DISCO, HOW ASPIRATIONAL WAS THAT? BELONGING TO A VERY CLOSE GROUP THAT NOBODY ELSE WANTED TO GO. THE REST OF THE TIME, YOU JUST KEPT YOUR MOUTH SHUT...NOW IS LIKE LOSING THAT SENSE OF BELONGING TO SOMETHING REALLY SPECIAL, RADICAL AND TRANSGRESSIVE.- MINDY

THINKING ABOUT WHAT THE 80S WAS LIKE, BEING NEWLY OUT AND HEARING ABOUT THOSE WEIRD THINGS HAPPENING IN NEW YORK, THIS "GAY PLAGUE", ALL THAT STUFF, WE HEARD RUMOURS COMING OVER THE ATLANTIC, THINKING ABOUT THE MARGINALITY OF OUR LIVES. DOING THE GARDEN HAS REALLY MADE ME THINK ABOUT THOSE TIMES AND THE EQUIVALENCY BETWEEN THE HARSHNESS OF THE ENVIRONMENT OF DUNGENESS AND MOSLEY STREET.- MINDY

DAVID: IT WAS IN THE MANCHESTER EVENING NEWS: MEN ARRESTED ACCUSED OF GROSS INDECENCY, THEN THERE WAS A PROTEST AGAINST THE TRIAL. SOMEBODY TOOK A PHOTOGRAPH OF ME UNDER THIS POSTER [THAT DENOUNCED THE ARRESTS]. I WAS QUITE EMBARRASSED AT THE TIME THINKING WHAT IF SOMEBODY SEES ME AND RECOGNISES ME? I WASN'T TELLING EVERYBODY I'M GAY, OTHER THAN MY FAMILY AND MY FRIENDS'

MINDY: DOING THIS GOT ME THINKING BACK TO WHAT THE 80S WERE LIKE; IT HAS BEEN ILLUMINATING. I WAS SO ANGRY, BACK IN THE 80S WE WOULDN'T BE SPEAKING WITH EACH OTHER BECAUSE YOU WERE GAY AND I WAS A LESBIAN.

DAVID: THERE WERE MEN GETTING ARRESTED BECAUSE THEY WERE KISSING EACH OTHER. IF IT WAS TWO HETEROSEXUALS HAVING SEX SOMEWHERE THEY WOULDN'T BE ARRESTED.

PHILIP: BUT BACK IN THE 70S THAT WAS THE ONLY OPTION. WHERE DO YOU MEET MEN? IN THE TOILETS!

DAVID: SOME WOULDN'T HAVE THE NERVE TO GO TO A GAY PUB SO COTTAGES WERE THE ONLY OPTION. THE POLICE USED TO DRAG PEOPLE OUT OF THE TOILETS AND ARREST THEM.



## PHILIP'S STORY

BRILLIANT, GORGEOUS, PAINTED GAY  
VIVID, FLAUNTING, LURID LOUD  
SCREAMING, SHRIEKING, MARCHING PROUD  
MELLOW, MATCHING, DEEP AND SOMBRE  
PASTEL, SOBER, DEAD AND DULL  
CONSTANT, COLOURFUL, CHROMATIC  
PARTY COLOURED, AND PRISMATIC  
KALEIDOSCOPIC, VARIEGATED  
TATTOOED DYED ILLUMINATED  
DAUBED AND SCRAMBLE, DIP AND DIE  
HIGH-KEYED COLOUR LIE

-EXTRACT FROM DEREK JARMAN'S CHROMA: A BOOK  
OF COLOUR, 1993



I GENUINELY THINK THAT THE 80'S WERE  
PROBABLY THE BEST OF TIMES. WE  
WERE INVINCIBLE AND PROUD. PART OF  
BRISTOL AND BATH GAY WEST SOCIAL  
GROUP. VERY FOND MEMORIES TO LOOK  
BACK AND REMEMBER. - PHILIP

NOT ONLY DOES THIS REFLECT  
UPON THE MYRIAD OF COLOURS,  
WITHIN THE GLORY OF NATURE.

IT VERY MUCH DESCRIBES OUR  
LIFE'S JOURNEY AS GAY MEN.  
THE ONGOING POLITICAL CLIMATE  
OF THE 60'S 70'S AND 80'S.  
FIGHTING FOR EQUALITY. BUT  
THE FLAMBOYANT, HEDONISTIC  
CAREFREE LIFESTYLE WE CRAVED.  
THE HOPES AND ASPIRATIONS OF  
NEW BEGINNINGS.

MY LIFE CHANGED CHRISTMAS  
2007 IRREVOCABLY, WHEN A BRAIN  
TUMOUR WAS REMOVED. AS A  
RESULT I LOST ALL SENSE OF TASTE  
AND SMELL.

NO LONGER ABLE TO DRIFT  
THROUGH THE FRAGRANCE OF  
NATURE. A LOST MEMORY GONE  
FOREVER. HOWEVER IT DOES  
POSE AN INTERESTING THOUGHT. I  
WONDER IF HE WAS USING COLOUR  
AS A METAPHOR FOR PEOPLE -  
PHILIP

I THINK THAT IT'S IMPERATIVE THAT THESE  
STORIES ARE TOLD TO A WIDER PLATFORM.  
I HOPE THAT LISTENERS COULD HEAR THAT  
DESPITE THE ATROCITIES, ONE COULD LEAD  
A FULFILLING LIFE. WE DID THE BEST WE  
COULD IN THE WORLD THAT WAS OFFERED  
TO US...WHEN I WAS 8 OR 9, GAY MEN  
HADN'T BEEN INVENTED. BUT I JUST KNEW.  
WHEN I WAS 7 I STOOD IN A SCHOOL  
PLAYGROUND AND I KNEW DAMN WELL  
WHERE I WAS GOING. - PHILIP



## DAVID'S STORY

### Manchester police arrest 13 in gay pub raid

01 May 1994



"My friend and I aged about 10".

I GUESS I KNEW I WAS DIFFERENT FROM A VERY EARLY AGE. I WAS MORE INTERESTED IN THINGS LIKE COOKING AND KNITTING THAN FOOTBALL OR OTHER MAINSTREAM MANLY THINGS.

WHEN I WAS ABOUT 8 I MET A BOY FROM AROUND THE CORNER FROM ME WHO BECAME A LIFE LONG FRIEND AND THERE WAS ALSO MY SECOND COUSIN TOO AND THE THREE OF US USED TO HANG AROUND TOGETHER.

WE ALL FELT WE WERE DIFFERENT AND ALTHOUGH WE LIKED GIRLS WE WERE ATTRACTED SEXUALLY TO THE SAME SEX. I THINK I WAS LUCKY REALLY TO BE IN THIS SMALL GROUP AS WE ALL WERE THERE TO SUPPORT ONE ANOTHER THROUGH OUR TEENAGE YEARS.



"Me and my band Fusion in 1975".

LATER WHEN I WAS ABOUT 16 AND WORKING AT THE POST OFFICE I MET A GAY TRAFFIC WARDEN AND IT WAS HE WHO ACTUALLY INTRODUCED ME TO THE GAY SCENE. I LEFT HOME NOT LONG AFTER MY MOTHER PASSED AWAY FROM CANCER WHEN I WAS 17. MY DAD MARRIED AGAIN AND HE WAS OF THE VICTORIAN MINDSET AND I DON'T THINK HE COULD ACCEPT ME BEING GAY.- DAVID

COTTAGING: A GAY SLANG TERM, ORIGINATING FROM THE UNITED KINGDOM, REFERRING TO SEX BETWEEN MEN IN A PUBLIC LAVATORY OR 'COTTAGE'. THIS IS BECAUSE OLD ENGLISH TOILETS IN PUBLIC SPACES LIKE PARKS RESEMBLED SMALL COTTAGES.



## MINDY'S STORY

WHEN I CAME OUT IN 1980S I KNEW MY CHANCE OF HAVING CHILDREN AND MY CAREER WOULD BE AFFECTED, AND I LOVED MY CAREER AND I WANTED TO HAVE CHILDREN... AND THE PROMISE I MADE TO MYSELF IS THAT I'D NEVER WALK ROUND ANYBODY, ANYBODY, ON THE SUBJECT OF MY SEXUALITY, BECAUSE I'D ALREADY PAID MY PRICE...I WAS ACTUALLY A BLOODY GOOD TEACHER.

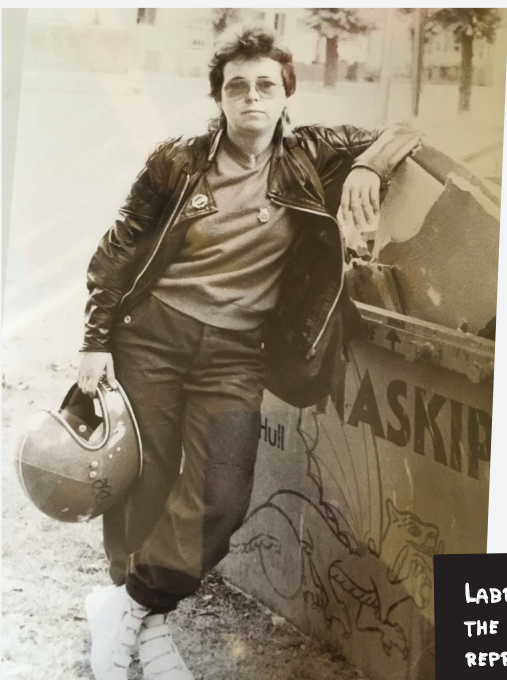
IN 1983, I WAS IN HOSPITAL FOR CERVICAL CANCER SURGERY, AND WHILST I WAS ON THE WARD ANOTHER LESBIAN CAME IN. THREE MONTHS AFTER I LEFT HOSPITAL SHE TURNED UP AT A PARTY AT MY HOUSE AND SAID THAT I HAD MADE THINGS EASIER FOR HER BECAUSE I OUTED MYSELF AND OPENED A WINDOW.



HER LIFE WAS EASIER BECAUSE OF ME. SHE WAS JUST THE SECOND LESBIAN OF THE WARD...IF YOU ARE IN A POSITION TO DO SOMETHING THAT ALLOWS OTHER PEOPLE TO WALK BEHIND YOU THEN DO IT... MY MESSAGE FOR PEOPLE COMING OUT NOW? ENJOY.

IT'S EASIER; IT'S NOT EVEN A THING. YOUNGER GENERATIONS JUST DON'T GET THE DIVISION; 'WHAT'S ALL THIS LABELLING ABOUT? ON THE OTHER HAND, WHEN IT WAS ALL IN THE CLOSET YOU GOT THAT THING ABOUT JOINING A SECRET CLUB, WITH SECRET JEWELLERY, LIKE THE LABRYS.

IN THE EARLY 90S I DISCOVERED I 'D BEEN OUSTED TO THE POINT I COULDN'T GET A JOB, THAT'S WHY I MOVED TO MANCHESTER. I MOVED TO MANCHESTER BECAUSE I HAD FRIENDS HERE AND I KNEW THAT MANCHESTER WAS A GAY-FRIENDLY CITY. - MINDY



**LABRYS: IN THE 1970S, THE LABRYS WAS ADOPTED BY THE LESBIAN COMMUNITY AS A LESBIAN FEMINIST SYMBOL REPRESENTING STRENGTH AND SELF-SUFFICIENCY.**



# HAZEL'S STORY

THINGS I HAVE LEARNT ABOUT DEREK JARMAN  
AND HIS GARDEN

I CAN TELL YOU THAT DEREK JARMAN LOVED  
HIS GARDEN. HE NEVER SET OUT TO START  
A GARDEN. IT WAS AN ACCIDENTAL GARDEN.  
SEA KALE, GORSE, CISTUS, SALVIA, FENNEL AND  
POPPIES. HE FOUND THE RIGHT PLACE FOR EACH  
PLANT SO THAT IT COULD THRIVE IN THE SHINGLE  
THAT IS DUNGENESS. HE FELT THAT HE SHOULD  
HAVE BEEN A GARDENER ALL ALONG.

I CAN TELL YOU HOW HE SEEMED TRADITIONAL  
AND YET HIS WORK WAS RADICAL, HOW  
HIS GARDEN WAS OUTWARD-LOOKING YET  
CONTEMPLATIVE, VAST YET INTIMATE, WILD YET  
PRECISE. I CAN TELL YOU THAT HIS GARDEN HAS  
NO BOUNDARIES OTHER THAN THE HORIZON,  
AND HOW THE HUMMING OF DUNGENESS B  
MIXES WITH THE SEA BREEZE.

I CAN TELL YOU HOW HE RAGED WITH FURY AT  
THE WAY IN WHICH HIS GENERATION OF GAY MEN  
WAS TREATED.

HOW THEY DIED PAINFUL DEATHS AND IN  
MANY CASES, LONELY, ESTRANGED FROM  
THEIR FAMILIES. BUT ALSO, HOW THEY  
BELONGED TO THEIR OWN CHOSEN FAMILIES,  
EVEN IF THEY DIDN'T ALL GET ON. I CAN TELL  
YOU THAT DEREK JARMAN DIDN'T IDENTIFY  
WITH THE STONEWALL PEOPLE OR CASHMAN  
OR SOME OF THE OTHER MEDIA GAYS.

I CAN'T TELL YOU WHAT DEREK JARMAN FELT  
ABOUT HIS TOO-SOON DEATH OR LEAVING  
HIS FRIENDS OR THE PLACES AND PEOPLE HE  
LOVED. OR LEAVING HIS GARDEN. I'M NOT  
EVEN SURE THAT HE WOULD LIKE WHAT WE'RE  
DOING IN MANCHESTER, CREATING A GARDEN  
ALL ABOUT HIM.

HE NEVER WANTED A PANEL ON THE AIDS  
QUILT, IN FACT HE SAID HE WOULD 'HAUNT'  
ANYONE WHO MADE ONE FOR HIM. SO WHAT  
WILL HE THINK OF OUR GARDEN, INSPIRED BY  
HIM AND HIS HOME AT PROSPECT COTTAGE,  
INSPIRED BY HIS REFUSAL TO BE SILENCED BY  
THE STATUS QUO, INSPIRED BY HIS INSISTENCE  
THAT LOVE IS A HUMAN RIGHT FOR US ALL?

---

## HAZEL'S THOUGHTS ON JARMAN'S LINES

*"I walk in this garden  
holding the hands of dead friends.  
Old age came quickly to my frosted generation,  
cold, cold, cold, they died so silently."*

*The outrage, sadness, bewilderment and loss  
of young men dying too soon.  
Leaving behind their dignity, bravery, fury  
and witness,  
we have the privilege of loving who we want  
and growing old.*

*"Up hill, down dale we go to Prospect Cottage,  
which grows like a tree – more beautiful as it ages."*

*Here you can hide and heal;  
or you can stand up, speak up,*

*defy the odds, protest and rage,  
make things change. I am who I say I am.*

*"If a garden isn't shaggy, forget it.  
try this wildness in a corner. It will bring you great  
happiness."*

*Find your wild corner and protect it like mad.  
It's all we've got.*

*"Lizards you are bent not straight.  
Lizzy the lezzy  
is quite the best..."*

*This garden speaks  
of difference and resilience, tradition and  
radical thinking, pleasure and beauty, formality  
and playfulness.*

Quotes in colour from the book called 'Derek Jarman's Garden' (Thames & Hudson 1995)



## PAUL'S STORY

IN THE SUMMER OF 2020, DURING A BRIEF BREAK FROM COVID LOCKDOWN, I VISITED THE SOUTH COAST FOR A WEEK WITH A FRIEND. ONE HOT SUMMER'S DAY WE CYCLED FROM RYE OUT TO DUNGENESS, THROUGH THE WIDE FLAT EXPANSES OF ROMNEY MARSH AND THE PRETTY VILLAGE OF LYDD BEFORE EMERGING OUT ONTO THE SURREAL LANDSCAPE OF DUNGENESS.

I WAS COMPLETELY MESMERISED BY THIS 'OTHER WORLDLY' PLACE, A VAST LANDSCAPE WITH NO HORIZON AND DOMINATED BY A NUCLEAR POWER STATION, NOT SOMETHING YOU COULD CALL BEAUTIFUL BUT YET THERE WAS SOMETHING MAGICAL ABOUT THE RAWNESS AND SIMPLICITY OF THE ENVIRONMENT.



Derek Jarman, Dungeness. (St Derek and the Laying on Hands) 1991 - Courtesy and © Ed Sykes

Blue, 1993, (still) Photo Liam Daniel, courtesy Basilisk Communications

WE HAD GONE TO SEE DEREK JARMAN'S COTTAGE AND GARDEN ALTHOUGH AT THE TIME I DIDN'T KNOW THAT MUCH ABOUT HIM. I INSTANTLY FELL IN LOVE WITH THE BLACK TAR COTTAGE, IT'S SIMPLE AND GEOMETRIC SHAPE AND YELLOW FRAMED WINDOWS SURROUNDED BY A GARDEN CONTAINING ARCHITECTURAL ELEMENTS OF THE SEA. AS AN ENTHUSIASTIC AMATEUR GARDENER, I MARVELLED AT HOW ANYONE COULD GROW PLANTS IN THIS INHOSPITABLE LANDSCAPE AND THAT'S WHEN I BEGAN TO READ AND DISCOVER ABOUT JARMAN THE GARDENER AND DIARIST.

THROUGH MY INVOLVEMENT IN THIS PROJECT, I'VE STARTED TO LEARN SO MUCH MORE ABOUT DEREK JARMAN; JARMAN THE GARDENER, WRITER, ARTIST, POET, FILM MAKER, AS WELL AS HIS ACTIVISM FOR LGBT RIGHTS AND HIS VERY PERSONAL BUT PUBLIC BATTLE WITH HIV AND AIDS.

WE ARE A SMALL GROUP OF VOLUNTEERS, AMATEUR BUT ENTHUSIASTIC GARDENERS, ALL WITH OUR OWN CONNECTION TO JARMAN AND IT'S BEEN FASCINATING AND A PRIVILEGE TO HEAR THEIR STORIES. THE LANDSCAPE OF MANCHESTER CITY CENTRE IS AS INHOSPITABLE AS DUNGENESS! - PAUL



# DO WORDS MATTER? 'QUEER ELDERS', LGBT+ IDENTITY, AND INTERGENERATIONAL CONVERSATIONS

THE COLLECTIVE IS KEEN TO TALK ABOUT HOW THINGS HAVE CHANGED FOR LGBT+ COMMUNITY, AND USE OF TERMINOLOGY, LIKE 'QUEER':

"YOUNGER PEOPLE SAY THAT GAY PEOPLE HAVE RECLAIMED THE WORD."

"WHO ARE THESE PEOPLE?"

"TO ME QUEER WAS LIKE VERY OFFENSIVE AT SCHOOL. IT HAS TAKEN ME A LOT TO GET USED TO IT."

"IT'S SO COMMON-PLACE NOW;  
EVERYTHING IS QUEER."

"I CAN'T UNDERSTAND WHY IT HAS BECOME SO POPULARISED."

"I THINK IT IS BECAUSE IT ALLOWS PEOPLE WHO ARE HETEROSEXUAL WHO CAN ACTUALLY BE INCLUDED AS QUEER. IT'S BECOME A VERY INCLUSIVE TERM; YOU DON'T HAVE TO BE A PRACTICING HOMOSEXUAL TO LABEL YOURSELF QUEER."

"I THOUGHT IT HAD BEEN RECLAIMED IN THE 80S AND THAT WAS IT, DONE, LIKE DYKE. MY WIFE DOESN'T LIKE THE WORD DYKE."

"DYKE, I THINK THAT'S OFFENSIVE AS WELL. IF YOU SAID TO A LESBIAN 'YOU'RE A DYKE', THAT WOULD BE LIKE INSULTING HER."

"TITLING THE SHOW, HOWEVER, WAS A GROUP DECISION. ORIGINALLY TITLED 'SHIPWRECKED' -AN OBLIQUE DIARY REFERENCE FROM DEREK DESCRIBING 'A CESSPIT AT THE HEART OF MANCHESTER' THE TITLE WAS SOON AFTER DECLARED AS 'QUEER'.

AUDACIOUS, BLATANT, INTENTIONALLY PROVOCATIVE, WE HAD MANY SERIOUS CONVERSATIONS, WHICH WERE NEVERTHELESS LACED WITH HUMOUR DUE TO THEIR ABSURDITY, AS TO WHETHER DEREK JARMAN QUEER OR QUEER DEREK JARMAN WAS THE MOST APPROPRIATE WORD ORDER FOR THE PUBLICITY BANNERS.

BUT THE TITLE WAS NOT WITHOUT CONTENTION. I WAS INVITED TO THE OFFICE OF A PROMINENT COUNCILLOR WHO, WHILST STATING CATEGORICALLY HIS SUPPORT FOR THE SHOW, DREW MY ATTENTION TO THE FACT THAT THE OPENING DATE WAS THE WEEK FOLLOWING THE LOCAL ELECTIONS, WHICH WERE SCHEDULED FOR THE SEVENTH OF MAY.

I WAS ADVISED NOT TO USE THE TITLE 'QUEER' BEFORE THE ELECTION DATE."

- EXTRACT FROM QUEERING THE CITY: MANCHESTER 1992, BY JEFFREY HORSLEY, THE CURATOR OF THE 1992 DEREK JARMAN'S EXHIBITION AT THE MANCHESTER ART GALLERY.





Exterior Manchester Art Gallery, 1993  
'Queer' banner. Courtesy of Howard Sooley

IT WAS GOOD THAT HE CHOSE A TERM THAT WAS INCLUSIVE. BACK IN THE DAY, GAY MEN WERE REALLY SEPARATE FROM LESBIANS.- MINDY

SO, WORDS DO MATTER... BELOW, SOME EXAMPLES OF A HELPFUL LGBT+ GLOSSARY PRODUCED BY THE NATIONAL MUSEUMS LIVERPOOL

## COMING OUT

SHORT FOR 'COMING OUT OF THE CLOSET', THE PHRASE IS USED TO DESCRIBE A PERSON TELLING OTHERS THEY ARE GAY, LESBIAN, BISEXUAL, TRANS OR QUEER.

## INTERSECTIONALITY

ACKNOWLEDGES THAT A PERSON'S IDENTITY IS INFORMED BY THEIR GENDER, SEXUALITY, RACE, CLASS AND ABILITY, AMONGST OTHER THINGS, AND THAT THEIR EXPERIENCES OF OPPRESSION WILL BE INFLUENCED ACCORDINGLY.

## GENDER

GENDER REFERS TO THE SOCIALLY CONSTRUCTED CHARACTERISTICS OF WOMEN AND MEN. IT VARIES FROM SOCIETY TO SOCIETY AND CAN BE CHANGED.

BACK IN THE DAY I WOULDN'T HAVE ANYONE CALL ME GIRL, OR LADY. A WOMAN IS GOOD ENOUGH! LESBIANS WERE SO ANGRY ABOUT EVERYTHING. FEMINISM AND LGBT RIGHTS, IT WAS A DOUBLE WHAMMY. LESBIANS WERE DESPISED BY EVERYBODY IN THE SAME WAY THAT BEING CAMP FOR MEN WAS DESPISED, IT WAS LIKE LOWERING YOURSELF, IT WAS ALL VERY PATRIARCHAL. ALL THIS HAS MOVED ON, BUT I SAY TO THE YOUNG ONES, IF YOU REALLY FEEL YOU'VE GOT THE RIGHT WORD, THE RIGHT POLITICAL ANALYSIS, ENJOY YOURSELF BECAUSE IT WON'T LAST. - MINDY

I WAS MORTIFIED WHEN A RADIO HOST ANNOUNCED ME AS A QUEER ELDER. I HAVE ALWAYS FOUND THIS TERMINOLOGY DEROGATORY. HAVING GROWN UP IN THE 50S 60S WHERE IT WAS A VERY REGULAR OCCURRENCE BEING CALLED QUEER. I WAS NEVER QUEER. I WAS AN INDIVIDUAL DISCOVERING WHO AND WHAT I WAS. WHAT I FIND INCOMPREHENSIBLE IS THAT IT SEEMS ON TREND TO USE THIS AS RECOGNITION AS BEING GAY LGBT... I JUST WONDER HOW MANY OTHER ELDERS ARE AFFECTED BY THE TERMINOLOGY.

AS I SAID IT JUST SEEMS TO BE BANDIED AROUND NOW AS A NORMAL PART OF OUR VOCABULARY. IT ALMOST FEELS LIKE WE'RE THE LOST GENERATION AND NOT TAKEN INTO CONSIDERATION WHEN THESE DECISIONS ARE MADE. - PHILIP



# PERIPATETIC ENCOUNTERS WITH URBAN NATURE



BEFORE ROLLING UP OUR SLEEVES AND GETTING STUCK INTO CREATING OUR OWN LITTLE GREEN OASIS, THE DEREK JARMAN POCKET GARDEN AT MANCHESTER ART GALLERY, WE TOOK THE OPPORTUNITY TO VISIT SOME GREEN SPACES IN AND AROUND MANCHESTER. OUR VISITS INCLUDED PLACES REFLECTING THE LGBTQ+ COMMUNITY'S STRUGGLE FOR RECOGNITION AND RIGHTS AS WELL AS PLACES OFFERING A MUCH NEEDED BREATHING SPACE WITHIN OUR CITY ALONG WITH HOPE FOR THE FUTURE OF OUR ENVIRONMENT.

OUR FIRST VISIT AT THE END OF MAY WAS QUITE MOMENTOUS AS WE WERE ABLE TO MEET EACH OTHER IN PERSON FOR THE FIRST TIME AFTER MONTHS OF ZOOM MEETINGS.

WE MET AT SACKVILLE GARDENS, WHICH SEEMED THE BEST PLACE TO START AS ONE OF THE MOST WELL-KNOWN GREEN SPACES IN THE CITY LINKED TO THE LGBTQ+ COMMUNITY.





APART FROM ENJOYING THE PEACEFUL GREEN SPACE, WE TOOK OUR TIME TO ADMIRE THE VERY FIRST STATUE AND MEMORIAL FOR ALAN TURING AND TO REFLECT ON THE NATIONAL TRANSGENDER REMEMBRANCE MEMORIAL, AND THE BEACON OF HOPE MEMORIAL. WE ALSO VISITED THE COMMUNAL GARDEN AT THE GRADE II LISTED BUILDING VICTORIA SQUARE IN ANCOATS, WHICH WAS THE FIRST MUNICIPAL HOUSING BUILT IN MANCHESTER IN 1894 AND NOW HOUSES AROUND 170 OLDER PEOPLE. PETER, WHO IS A RESIDENT AT VICTORIA SQUARE, SHOWED US ROUND AND TOLD US THE STORY OF THE LATE DAME GRACY, THEIR GARDENER FOR SEVERAL YEARS.



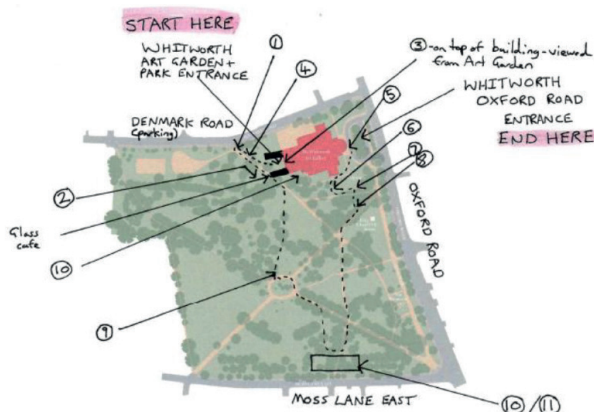
*Climbing Engel's head at Salford Art Gallery*

FROM JUNE TO SEPTEMBER 2021, WE VISITED A RANGE OF PARKS, GARDENS, AND URBAN GREEN SPACES INCLUDING THE NEWLY OPENED RHS BRIDGEWATER. DURING A SUNNY STROLL AROUND PEEL PARK (A FAVOURITE SUBJECT OF SALFORD ARTIST L.S. LOWRY), ROSIE NAYLOR FROM RHS BRIDGEWATER AND MIRANDA CLARKE FROM CITY OF TREES SHOWED US THE FANTASTIC WORK THE IGNITION LIVING LAB IS UNDERTAKING AT SALFORD UNIVERSITY.





# THE VISIONER'S VISION



LAWRIE IS CALLED THE VISIONER FOR A FEW REASONS, NOT LEAST FOR HIS ABILITY TO CREATE SIGHTS OUT OF WORDS, AS SEEN IN HIS DESCRIPTION OF ONE OF OUR PERIPATETIC ENCOUNTERS.

HE TOOK THE COLLECTIVE AROUND SECRET GREEN SPACES IN MANCHESTER GIVING US ALL FOOD FOR THOUGHT AND INSIGHTS INTO NATURE FOR INSPIRATION.

TO HAVE HAD THE OPPORTUNITY TO WORK ON A NEW POCKET PARK FOR THE PEOPLE OF MANCHESTER HAS BEEN SUCH AN INCREDIBLE EXPERIENCE, BUT THE FACT THAT THIS GARDEN HAS BEEN DESIGNED AND PLANTED BY A GROUP OF VOLUNTEER GARDENERS FROM OUR OVER 50s LGBTQ+ COMMUNITIES IN GREATER MANCHESTER MAKES IT A REALLY SPECIAL ACHIEVEMENT.

THE GARDENERS ARE OF A SIMILAR GENERATION TO DEREK JARMAN, AND THERE HAS BEEN MUCH REFLECTION ON THE IMPORTANCE OF HIS WORK IN RAISING THE VISIBILITY OF ISSUES FACING LGBTQ COMMUNITIES, AS WELL AS HIS POWERFUL EXPRESSION OF IDENTITY THROUGH HIS WORK. UNFORTUNATELY THIS GENERATION OF LGBTQ PEOPLE ARE NOW FACING A LACK OF VISIBILITY BOTH WITHIN LGBTQ COMMUNITIES AND WIDER SOCIETY, AND MANY ARE FACING GREATER LEVELS OF

ISOLATION DUE TO BEING LESS LIKELY TO HAVE CHILDREN AND A LACK OF CONNECTION TO FAMILY (WHO MAY HAVE OSTRACISED THEM DUE TO THEIR LGBTQ IDENTITY) ALONG WITH DISCRIMINATION IN HOUSING AND CARE SPACES. WE REALLY WANTED THIS GARDEN TO BE A RECOGNITION OF THEIR LIVES AND CONTRIBUTION TO SOCIETY, RUNNING IN PARALLEL WITH THE CELEBRATION OF DEREK JARMAN'S LIFE AND WORKS IN THE MAIN EXHIBITION SPACES.

LGBT FOUNDATION EXISTS TO CONTINUE THE WORK TOWARDS AN EQUAL AND FAIR SOCIETY FOR ALL LGBTQ+ PEOPLE, WHICH ACTIVISTS SUCH AS JARMAN AND HIS PEERS BROUGHT TO WIDER PUBLIC CONSCIOUSNESS IN THE 80s AND 90s. WE ARE DELIGHTED TO BE CELEBRATING HIS LEGACY, HISTORIC LINKS TO MANCHESTER AND THE LAUNCH OF THE PROTEST! EXHIBITION AT MANCHESTER ART GALLERY THROUGH THIS PROJECT.- LAWRIE



## THE CURATOR'S VISION

WE WANTED TO THINK ABOUT WHAT JARMAN'S WORK MEANT TO PEOPLE TODAY, AND WHAT HE MIGHT BE DOING IF HE WAS HERE WITH US. LAWRIE AND I HAD DISCUSSIONS ABOUT THE PRIDE IN AGEING GROUP...ALL THE THINGS THAT JARMAN PROTESTED AGAINST AND WORKED TO EITHER RAISE THE PROFILE OR CHANGE RESONATED WITH AND WERE RELEVANT TO THAT GROUP. SO WE DISCUSSED HOW WE MIGHT CREATE A GARDEN SPACE INSPIRED BY JARMAN'S PASSION FOR HIS GARDEN AT DUNGENESS.

A BIG PART OF THAT DECISION WAS HOW WE COULD MAKE LGBT+ OLDER PEOPLE MORE VISIBLE WITHIN THE CITY, AND HOW WE MIGHT REVISIT THOSE THINGS THAT JARMAN WOULD HAVE BEEN CONCERNED WITH TODAY, SUCH AS CLIMATE CHANGE. SO, THE GROUP SEIZED UPON THE IDEA OF THE GARDEN.

FOLLOWING THE MANCHESTER ART GALLERY EXHIBITION IN THE 90S THERE WAS ALSO A SOLO SHOW AT THE WHITWORTH, EVIL QUEEN. SO, JUST BEFORE HE DIED, HE WAS VERY VISIBLE IN MANCHESTER AND I UNDERSTAND HE WAS FOND OF THE CITY, IT'S GAY SCENE AND ACTIVIST COMMUNITY.

AROUND THIS TIME I WAS BECOMING MORE POLITICALLY AWARE, I REMEMBER BEING OUTRAGED ABOUT SECTION 28 AND WHAT IT MEANT, I COULDN'T UNDERSTAND WHY SUCH A DRACONIAN LAW WAS BEING PASSED.

I ALSO REMEMBER WATCHING BLUE, WHICH WAS SHOWN ON CHANNEL 4,

THE ONLY BROADCAST SHOWING RADICAL PROGRAMMING, AND BEING TRANSFIXED.

IN 2017, I WAS WORKING ON AN EXHIBITION WITH JON SAVAGE, WHO WROTE A SEMINAL BOOK ON THE PUNK SCENE ENGLAND'S DREAMING. WE WERE HAVING A CHAT ONE DAY WHEN JON SAW THE EXHIBITION POSTER FROM THE 1992 EXHIBITION AND JON SAID 'OH, JARMAN, I KNEW HIM. I MET HIM AT A BLONDIE GIG IN THE LATER 70S THEN WE BECAME FRIENDS, WE SHOULD THINK ABOUT A DOING A JARMAN SHOW'.

JON CONTACTED AMANDA WILKINSON, WHO IS PART OF THE TRUST WHO OVERSEE JARMAN'S ESTATE AND THE EXISTING WORKS THAT ARE NOT IN PUBLIC OR PRIVATE COLLECTIONS. AMANDA HAD ALREADY BEGUN DISCUSSIONS WITH IMMA ABOUT A JARMAN RETROSPECTIVE, AND SEAN KISSANE THERE HAD ALREADY DONE QUITE A LOT OF RESEARCH. LUCKILY, IMMA WERE OPEN TO WORKING IN PARTNERSHIP, SO PROTEST! WAS BORN. WITH JON'S INVOLVEMENT, WE'VE INCLUDED MORE OF A FOCUS ON JARMAN'S CONNECTION WITH PUNK AND POPULAR CULTURE HERE IN MANCHESTER.

HAVING THE OPPORTUNITY TO RECONNECT WITH THE LGBT+ COMMUNITY IN MANCHESTER TO CREATE THE DEREK JARMAN POCKET PARK ALSO ALLOWS THE GALLERY TO CONNECT WITH JARMAN'S PASSION FOR GARDENING AND CREATE A LASTING TRIBUTE TO HIM HERE IN THE CITY WHERE HE HELD HIS FINAL EXHIBITIONS. - FIONA



## THE ARTIST'S VISION

I REALLY APPRECIATED TAKING PART IN THE PROJECT AS A FACILITATING ARTIST, TO SUPPORT THE GROUP TO CO-PRODUCE THE GARDEN: DE-CENTERING FROM MY OWN CREATIVE DECISIONS, BRINGING MY ONLINE/OFFLINE GROUP FACILITATION SKILLS WITH AN ECOLOGICAL FOCUS TO SUPPORT THE GROUP IN MAKING DECISIONS.

WE STARTED THE PROJECT IN JUNE 2020 AND WORKED ONLINE THROUGHOUT SUMMER, AUTUMN AND WINTER. A LOT OF THAT TIME WAS SPENT IN LOCKDOWN AND MOST OF US DIDN'T KNOW EACH OTHER BEFORE THE PROJECT, SO WE TOOK EXTRA CARE TO CREATE WAYS TO CHECK-IN -AND CHECK-OUT WHICH EACH OTHER, GET TO KNOW EACH OTHER AS PEOPLE AND OUR RELATION TO JARMAN, SO WE COULD BUILD A COMMON GROUND DESPITE BEING PHYSICALLY ISOLATED FROM EACH OTHER.

ONE OF THE MAIN THINGS I'M TAKING AWAY IS THE NEED FOR MORE INTERGENERATIONAL LGBT EXCHANGES. IT WAS AN IMMENSE PRIVILEGE TO HOLD SPACE FOR LGBT PEOPLE OF OLDER GENERATIONS WHO WERE FIGHTING FOR FREEDOM WHEN I WASN'T BORN OR VERY YOUNG, AND WHO HAD VERY DIFFERENT LIFE EXPERIENCES FROM MINE.

ONE PARTICULAR ASPECT IS THE CONVERSATIONS AROUND LANGUAGE: I IDENTIFY WITH THE WORD 'QUEER' IN ITS VERSATILITY AS A VERB/ADJECTIVE AND ITS COMMITMENT TO QUESTIONING; THIS WORD ALSO HAS PAINFUL CONNOTATIONS



FOR OLDER PEOPLE WHO REMEMBER IT BEING USED AS A SLUR AGAINST THEM, SOMETHING I WAS UNAWARE OF WHEN I MOVED TO THE UK. THIS IS SOMETHING I HAVE TAKEN FORWARD IN EVENT DESCRIPTIONS, USING BOTH 'LGBTQ+' AND 'QUEER' WHEN THINKING ABOUT MAKING THE SPACES MORE ACCESSIBLE TO SEVERAL GENERATIONS, NOT JUST MINE - JULIET.





# THE HORTICULTURALIST'S VISION



I MET LAWRIE IN 2019, WHEN WE STARTED TO TALK ABOUT SOME IDEAS, THEN WHEN I JOINED THE PROJECT LATER IT WAS A REALLY EXCITING WAY OF CONTINUING ON THAT DISCUSSION, GOING ON JOURNEYS WITH PEOPLE. WE ALL MET ONLINE FIRST, BUT TO MEET EVERYONE IN REAL LIFE MADE ME SEE HOW IT ALL FITS TOGETHER. THE GARDENING SESSIONS HAVE BEEN FASCINATING BECAUSE PEOPLE HAVE DIFFERENT TAKES ON THE PROJECT. BECAUSE WE ALL LOVE PLANTS, BUT SOME SUPPORT THE ENVIRONMENTAL MOVEMENT, OTHERS HAVE ARTISTIC AND CREATIVE DIRECTIONS; EVERYONE BRINGING DIFFERENT PERSPECTIVES. THE FACT THAT A GARDEN, A PUBLIC SOCIAL SPACE, CAN BE ALL THOSE THINGS, IT'S VERY EXCITING.

I'M GAY AND I HAVEN'T ALWAYS HAD MUCH OPPORTUNITY TO SPEND TIME WITH OTHER LGBT GENERATIONS; IT'S BEEN IMPORTANT TO ME TO LEARN ABOUT THEIR, AND OUR COMMUNITY'S, PAST EXPERIENCES. I KNEW DEREK JARMAN AS A GARDENER AND QUEER ACTIVIST, BUT THEY BROUGHT SO MUCH MORE MEANING TO IT. THIS IS A VERY COMPLEX PROJECT IN TERMS OF SOME CHALLENGES. A LOT OF STAKEHOLDERS ENDED UP BEING BROUGHT INTO THE PROJECT, IT'S TAKEN US

LONGER, AND THERE WERE ISSUES ABOUT SOURCING MATERIALS AND FIGURING OUT WHAT PLANTS WERE GOING TO LOOK LIKE AS THAT TIME OF THE YEAR.

IT'S A HARSH ENVIRONMENT TO GREEN, AND TO PUT A GARDEN OR A PARK IN, BUT IT'S BEEN GREAT TO SEE THE WATER CONSERVATION AND RAIN WATER PROJECT COMING INTO FRUITION. WATER WAS ALWAYS GOING TO BE A LIMITING FACTOR AND THE PLANT CHOICES HAVE BEEN WELL-THOUGHT OF. SO MANY LEARNINGS CAN COME FROM THIS TO INFORM FUTURE LANDSCAPING. CREATING RAIN GARDEN PLANTERS, THE SHELTER WITH THE GREEN ROOF, PIPES AND WATER BUTTS.

PLANTERS HAVE RESERVOIRS BUILT INTO THEM SO THIS IS A RAIN WATER HARVESTING PROJECT. IT'S A SMALL-SCALE PROJECT THAT IS SCALABLE. HAVING MULTIPLE PEOPLE INVOLVED WITH DIFFERENT SKILLS MEANS THIS COULD BE A GENUINELY SUSTAINABLE PROJECT; NO POCKET PARK HAS BEEN DESIGNED OR ENGINEERED IN THIS WAY. - ROSIE

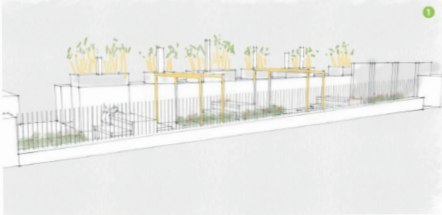
THE IGNITION LIVING LAB WITH ITS INNOVATIVE IDEAS AND DESIGN, GOT US THINKING ABOUT HOW URBAN GARDENS NOT ONLY BENEFIT MENTAL WELLBEING BUT ALSO SUPPORT ENVIRONMENTAL SUSTAINABILITY IN A TIME OF CLIMATE EMERGENCY. AS A RESULT OF THIS VISIT, AND WITH THE SUPPORT OF IGNITION AND RHS BRIDGEWATER, THE PLANTERS FOR OUR GARDEN WILL BE SUSTAINABLE AS WELL AS STYLISH! - PAUL



# THE ARCHITECT'S VISION

Sketches

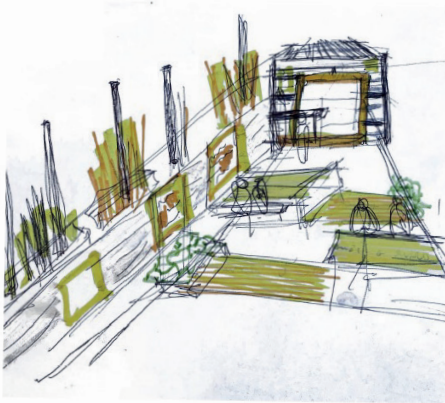
## EARLY DRAWINGS FOR THE POCKET PARK



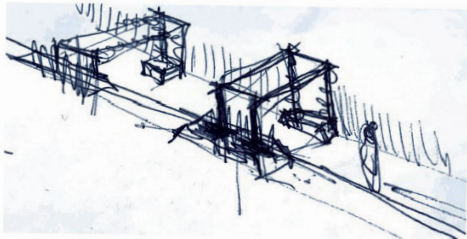
## 2. Concept development

Design process

PROJECT NAME GOES HERE



Caption goes here



Drawings courtesy of Exterior Architecture

All images used in this presentation remain the property of the copyright holder(s) and are used for the purpose of the presentation only.

5 | EXTERIOR ARCHITECTURE



# THE ETHNOGRAPHER'S VISION

IN 2020, I INTERVIEWED MINDY FOR ANOTHER PROJECT AND SHE TOLD ME ABOUT THE POCKET PARK IDEA. I WAS IMMEDIATELY SMITTEN. I FELL IN LOVE WITH JARMAN'S WORK IN THE LATE 80S THROUGH MARIANNE FAITHFULL'S BROKEN ENGLISH VIDEO, AND LATER WITH CARAVAGGIO. AS I GOT INTO FILM AND VIDEO MAKING IN THE EARLY 90S, I FOUND SNIPPETS OF JUBILEE AND THE GARDEN HAUNTING EVEN IF I HAD TO CONSUME HIS WORK IN SMALL DOSES.

I DON'T KNOW ANY OTHER FILM MAKER THAT MATCHES HIM IN HIS SKILLS OF MAKING THE ONEIRIC SO PALPABLE. BUT, ALONG WITH HIS SET DESIGN, SUPER 8 FILMS, AND ACTIVISM, IT IS THE WHOLE OF JARMAN'S LIFE-AS-ART THAT TRULY INSPIRED ME, WITH THE GARDEN IN DUNGENESS AS THE MASTERPIECE ENCAPSULATING ALL THE CREATOR'S OPPOSING FACETS. THE EXPERIENCE OF BEING INVOLVED IN THE CO-CREATION OF A POCKET PARK TO CELEBRATE THIS MULTI-FACETED, KALEIDOSCOPIC GENIUS HAS BEEN THRILLING. FROM THE PERSPECTIVE OF AN ANTHROPOLOGIST OF GREEN SPACES, THE RESEARCH REVEALED JUST HOW SOCIAL HUMAN-NATURE INTERACTION CAN BE.

I KEPT A FIELD DIARY OF THE CO-CREATION PROCESS WITH OBSERVATIONS ABOUT HOW THE DIFFERENT PARTS ASSEMBLED TOGETHER. I PARTICIPATED IN MEETINGS AND GATHERED STORIES ABOUT THE PEOPLE IN THE COLLECTIVE. PEOPLE'S ENGAGEMENT WITH THE IDEAL AND ACTUAL GARDEN BROUGHT DIFFERENT ACTORS TOGETHER AND CONNECTIONS WERE MADE.

AN ARCHITECTURE SUPERVISEE WHO HAD NEVER HEARD OF DEREK JARMAN USED THE POCKET PARK AS A CASE STUDY ELABORATING DESIGNS THAT WERE FREE FROM THE SPATIAL-TEMPORAL CONSTRAINTS OF REAL LIFE.

**CO-PRODUCTION: A METHOD FOR RESEARCHING AND/OR PUBLIC SERVICE DELIVERY THAT COLLABORATIVELY ENGAGES WITH THE PEOPLE, GROUPS OR COMMUNITIES WHO ARE THE SUBJECT OF THE WORK OR RESEARCH.**

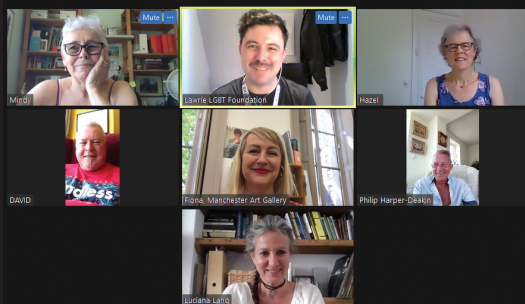


THERE WERE OTHER RESEARCH FINDINGS WHICH WILL BE EXPLORED ELSEWHERE, BUT FOR NOW IT SUFFICE TO SAY THAT THIS PROJECT IS A VALUABLE CASE STUDY FOR CO-PRODUCTION. STILL ONGOING, IT KEEPS US WALKING, BECAUSE IT IS ABOUT THE PROCESS. - LUCIANA

"GARDENING IS CENTRAL, ONE IS ENTERING ANOTHER TIME, INTO ETERNALS, RETURNS AND CYCLES, THOSE ARE THE RESURRECTION CYCLES IN MY LIFE." - DEREK JARMAN IN THE BBC ARENA DOCUMENTARY (1991)



# COLLABORATING THROUGH THE PANDEMIC



MANY OF OUR GROUP OF VOLUNTEER GARDENERS HAD THEIR LIVES TOUCHED BY JARMAN'S WORK AND ACTIVISM IN THE 1980S AND EARLY 1990S AND HAVE REVISITED HIS LEGACY AND INFLUENCE THROUGH WORKSHOPS AND DISCUSSIONS VIA VIDEO CALLS DURING THE COVID-19 LOCKDOWNS OF 2020. THESE ONLINE SESSIONS HAVE KEPT THE GROUP CONNECTED AND OFFERED A SOURCE OF CREATIVITY AND WELLBEING.

"I TRAPPED PURE SPIRIT IN MATTER."  
—FROM CARAVAGGIO, 1986

## **JULIE'S PROMPTS:**

**WHAT MOVES YOU ABOUT DEREK JARMAN'S WORK AND GARDEN?**

**WHAT DO YOU WANT TO CELEBRATE, AMPLIFY, MAKE VISIBLE IN THE GARDEN AT MANCHESTER ART GALLERY IN 2020?**

**WHAT DO YOU WANT THE "DEREK JARMAN POCKET PARK" TO LOOK/SMELL/TASTE/FEEL/SOUND LIKE?**

## **MEETING MINUTES - 13TH JULY, 2021**

**PHRASE DURING MEETING: "PAIN FROM BEING OSTRACISED CAN'T BE ALLEVIATED".**

**FIONA MET WITH PLANNER; DECIDED TO GO FOR THE SIMPLER STRUCTURE/HAVE THE ARCHES/WHAT CAN BE DONE INSIDE THE SHELTER: QUOTES?/FINALISING THE LIST OF PLANTS/GARDENER WORKING WITH CHELSEA GARDENS/START ORDERING THE PLANTS AND TREES/PUT TEXT ONTO PLANTERS.**

**HOW GROUP DYNAMICS WORK AMIDST THE PANDEMIC: PEOPLE WERE FEELING ANXIOUS: WILL IT HAPPEN?; 'DRAGS ON' 'I'M VERY POSITIVE NOW'.**

**RESTRICTIONS OF GRADE I BUILDING ADD TO ANXIETY; CONSTANT BATTLE WITH GRADE I LIMITATIONS AND HOW TO REPRESENT PROSPECT COTTAGE.**

**DIFFICULT TO BALANCE OUT PRIORITIES, PLANTERS AND TEXT.**

**PRAISE TO FIONA FOR BEING PERSISTENT.**

**BUT, WE CAN GET STARTED AT LAST!**

**PRIDE WEEKEND: POSTPONING THE LAUNCH/NEED TO BE MORE FLEXIBLE ABOUT THE LAUNCH/ DRAWING NEW SCHEDULE OF WHEN THINGS COULD HAPPEN/FOCUS ON THINGS WE CAN DO AND BE SAFE/INFORMATION AND RISK ASSESSMENT/DOING WORK IN THE GARDEN ON MONDAYS AND TUESDAYS WHEN GALLERY IS CLOSED.**



## COVID, WAITING, RESILIENCE & PREPARING THE GARDEN

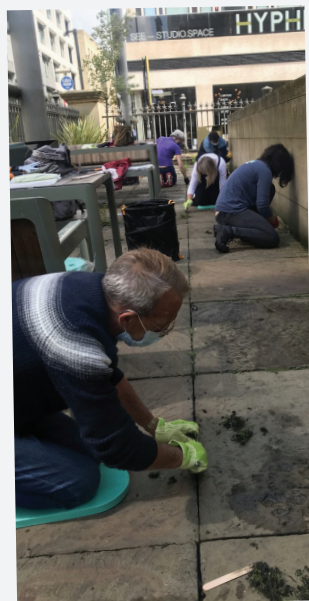


THE DAY WHEN WE ARE ACTUALLY PLANTING UP THE GARDEN, THAT'S WHAT THIS IS ALL ABOUT. – MINDY



DAVID DONATED SEVERAL TRAYS OF ORIENTAL RED POPPY SEEDLINGS ALONG WITH VARIOUS SUNFLOWERS AND DARK FLOWERING HOLLYHOCKS GROWN FROM SEED DARK PURPLE/BLACK (THESE MIGHT LOOK WELL IN THE SHINGLE BED) AND COSMOS. ALSO, VIVID ORANGE QUITE TALL TIPHONIA (ANNUALS), CARDOON AND A TEASEL COULD BE DONATED FOR THE SHINGLE BED TOO.

PHILIP HAS SEVEN SUNFLOWERS POTTED UP AND READY TO GO TOO. RED JASMIN, JASMINUM BEESIANUM AND ALSO THE WINTER FLOWERING JASMINE, JASMINUM NUDIFLORUM. BOTH JASMINS ARE PROLIFIC CLIMBERS. FOR THE SHINGLE BEDS: FENNEL AND TEASEL.



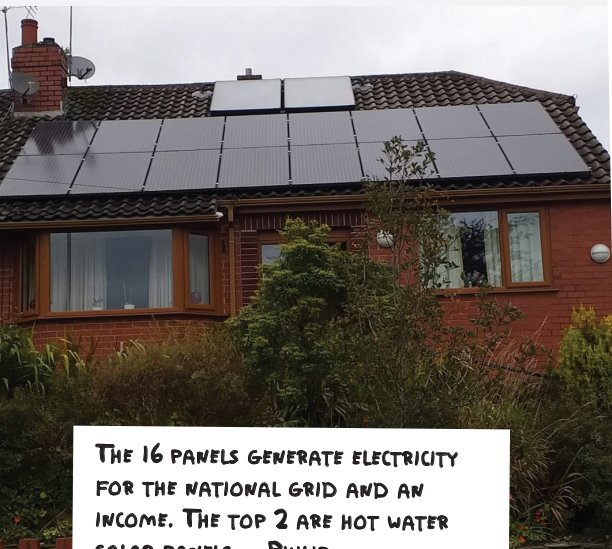


## GROWING OLDER AND GREENER



MINDY AT THE INTERNATIONAL DAY OF OLDER PEOPLE, THIS YEAR DEDICATED TO THE FIGHT AGAINST CLIMATE CHANGE.

I HAVE 4 WATER BUTTS AROUND MY HOUSE AND THEY ARE FILLED WITH THE RAINWATER FROM MY ROOF GUTTERING. I TRY TO USE RAINWATER ONLY NOT JUST BECAUSE IT IS FULL OF GREAT MINERALS AND NUTRIENTS BUT ALSO I DON'T LIKE TO PUT CHEMICALS ON TO MY PLANTS FROM WASHING UP WATER ETC.



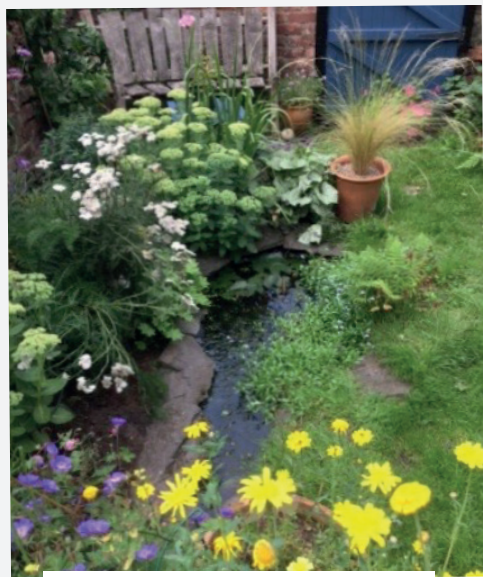
THE 16 PANELS GENERATE ELECTRICITY FOR THE NATIONAL GRID AND AN INCOME. THE TOP 2 ARE HOT WATER SOLAR PANELS. - PHILIP

INDEED ACID SOIL LOVING PLANTS, LIKE BLUEBERRIES AND CAMELIAS, ARE NOT TOLERANT TO THE LIME FOUND IN TAP WATER. I DISCOVERED THAT PLACING BANANA SKINS ON THE SURFACE OF SOFT FRUIT BUSHES AND FLOWERING PLANTS IS A GREAT WAY TO RECYCLE AS THEY QUICKLY ROT DOWN INTO THE SOIL ADDING NUTRITIOUS POTASSIUM THEREBY IMPROVING CROP YIELDS.- DAVID





WE ARE QUITE GOOD AT CONSERVING WATER IN THE GARDEN BECAUSE OF THE WAYS WE PLACED OUR GUTTERS TO CAPTURE RAINWATER. SO, THAT WATER RUNS BACK INTO THE GARDEN. WHEN YOU HAVE LOTS OF CATS IT'S NOT REALLY ETHICAL TO ENCOURAGE BIRDS IN THE GARDEN, SO WE HAVE FISH.- MINDY



IN MY HOUSE IT'S ALL TRIPLE-GLAZED AND INSULATED - PHILIP

MY GARDEN IS VERY SMALL BUT I TRY TO MAKE IT WILDLIFE FRIENDLY TO INCREASE BIODIVERSITY. IT IS NOT A TIDY GARDEN AND I LEAVE THE GRASS TO GROW QUITE LONG AND TRY TO PROVIDE DIFFERENT WILDLIFE HABITATS

1. COMPOST BIN IN WILD CORNER OF GARDEN + INCLUDES NETTLES TO THE LEFT OF THE BIN & WOOD PILE HABITAT TO THE RIGHT.

2. WILDLIFE POND + HOME TO FROGS & TOADS.

3. BIRD FEEDER WITH BUG HOTELS ON THE WALL IN THE BACKGROUND.

4. WORMERY + SMALL SCALE COMPOST MAKER THAT USES VEG PEELINGS, PAPER/CARDBOARD ETC.

5. HEDGEHOG HOUSE + GAP UNDER BLUE GATE WHERE HEDGEHOGS CAN GET IN AND OUT OF GARDEN. WE PROVIDE FOOD -KITTEN BISCUITS FOR THE HEDGEHOGS EVERY NIGHT & HAVE HEDGEHOGS VISITING REGULARLY WITH BOTH HEDGEHOG HOUSES USED FOR SLEEPING &/ OR HIBERNATING DURING THE PAST YEAR. - HAZEL





# BACK TO OUR SPACE OUTSIDE

## MANCHESTER ART GALLERY...

THE TIMEFRAME FOR THE POCKET PARK AND OF THE EXHIBITION WAS EXTENDED BECAUSE OF COVID, INCREASING THE TEMPORAL DIMENSION AND ADDING DEPTH TO THE RELATIONS WITHIN THE GROUP.

JULIET HAD MORE TIME TO DO CREATIVE WORKSHOPS, HAZEL AND PAUL GOT INTO WRITING BLOGS NARRATING THE PROCESS, LAURIE ENVISIONED NEW LANDSCAPES FOR THE COLLECTIVE TO EXPLORE OUTDOORS, DAVE AND PHILIP DISPLAYED

THEIR COMPREHENSIVE KNOWLEDGE OF PLANTS, FIONA AND ROSIE DEvised WAYS OF MAKING THE GARDEN MORE ENVIRONMENTALLY SOUND , AND LUCIANA KEPT ASKING QUESTIONS AND COLLECTING STORIES

"THERE'S PEOPLE WITH EXPERTISE IN PLANTING, PEOPLE WITH EXPERTISE IN MAKING A BLOG; I'M GOOD AT MAKING CONNECTIONS!" - MINDY

RAISED AREA (WALL BY THE ENTRANCE RAMP):	BEDDING PLANTS SUGGESTED BY PHILIP AND DAVID:
<p>PLANTERS WITH ALTERNATING SCHEME OF GRASSES AND SEASONAL FLOWERS: MELICA ALTISSIMA AND CAREX.</p> <p>THE FOLLOWING SPECIES COULD BE WORTH CONSIDERING AS THEY HAVE GOOD FORM AND PROVIDE SEED HEADS IN THE WINTER, AND AS DAVID SUGGESTED COULD WORK NICELY WITH OTHER TALL PERENNIALS LIKE JAPANESE ANEMONES:</p> <ul style="list-style-type: none"> <li>• HOLLYHOCKS</li> <li>• JAPANESE ANEMONES</li> <li>• SUNFLOWERS</li> <li>• POPPIES</li> <li>• ALLIUMS</li> <li>• POLYSTICHUM</li> <li>• NASTURTIUMS</li> </ul> <p>CLIMBERS FOR WOODEN ARCHES:</p> <ul style="list-style-type: none"> <li>• CLEMATIS</li> <li>• JASMINE WHITE STAR (GREAT SCENT)</li> </ul>	<ul style="list-style-type: none"> <li>• AFRICAN MARIGOLD</li> <li>• TRAILING PETUNIAS</li> <li>• BUSY LIZZIE</li> <li>• COSMOS</li> <li>• ANTIRRHINUM</li> <li>• COLEUS (MIXED) GAZANIA</li> <li>• BEGONIA</li> <li>• POLYSTICHUM POLYBEPHAURM</li> <li>• TRAILING PETUNIAS</li> <li>• BUZZY LILIES</li> <li>• POPPIES</li> <li>• COLEUS</li> <li>• RUDBECKIA</li> <li>• HELIANTHEMUM</li> <li>• PRIMULA VIALI</li> <li>• ECHINACEA</li> <li>• SELENIUM</li> </ul>



## COLLABORATORS TO THE ZINE

DAVID RHODES

FIONA CORRIDAN

HAZEL ERREY

LAWRIE ROBERTS

LUCIANA LANG

JULIET DAVIS

MINDY MELEYAL

PAUL EVERITT

PHILIP HARPER-DEAKIN

RICHARD BERTHON

ROSIE NAYLOR

## CONTACT & FEEDBACK

WE WOULD APPRECIATE FEEDBACK  
AND COMMENTS REGARDING BOTH THE  
PROJECT AND PARTICIPATORY METHODS.  
YOU CAN DO THIS BY CONTACTING THE  
RESEARCHER-IN-RESIDENCE:

[LUCIANA.LANG@MANCHESTER.AC.UK](mailto:LUCIANA.LANG@MANCHESTER.AC.UK)

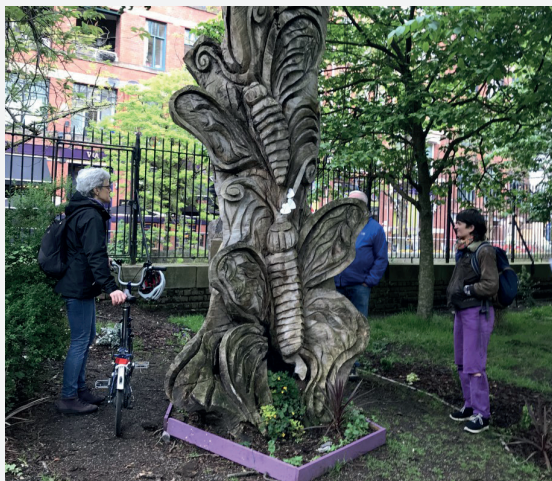
OR USING #DEREKJARMANPOCKETPARK

FOR MORE INFORMATION ABOUT PRIDE  
IN AGEING PLEASE CONTACT THE LGBT  
FOUNDATION:

[WWW.LGBT.FOUNDATION/PRIDEINAGEING](http://WWW.LGBT.FOUNDATION/PRIDEINAGEING)  
0345 330 3030

## FUTURE EVENTS COMING OUT OF THE WOODWORK

MANCHESTER ART GALLERY IS WORKING WITH  
A RANGE OF PARTNERS TO DELIVER A JARMAN  
RELATED EVENTS PROGRAMME DURING THE  
EXHIBITION. SEE [MANCHESTERARTGALLERY.ORG](http://MANCHESTERARTGALLERY.ORG)  
FOR FURTHER DETAILS AS THEY ARE PLANNED.

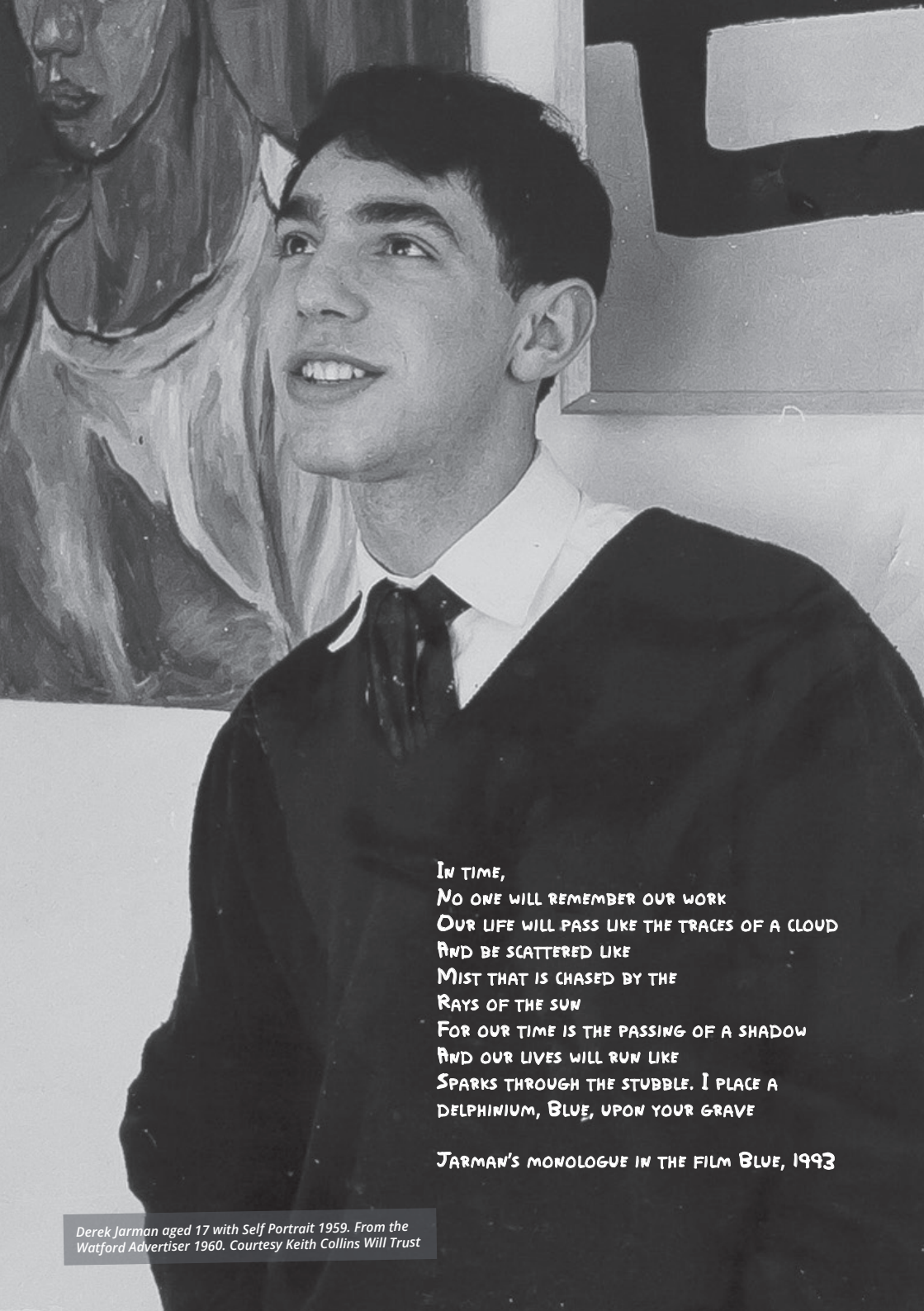


JEZ DOLAN WILL BE ARTIST IN RESIDENCE IN  
THE EXHIBITION EACH THURSDAY AFTERNOON  
AND WILL WORK WITH THE GALLERY ON A  
PROGRAMME OF COMMISSIONS AND EVENTS  
BETWEEN DECEMBER 2021 AND APRIL  
2022. FOR FURTHER INFORMATION AS THE  
RESIDENCE UNFOLDS SEE:

[WWW.MANCHESTERARTGALLERY.ORG](http://WWW.MANCHESTERARTGALLERY.ORG)

A PROGRAMME OF DEREK JARMAN FILMS  
AND EVENTS WILL TAKE PLACE AT HOME  
MANCHESTER IN FEBRUARY AND MARCH  
2022. SEE [WWW.HOMEMCR.ORG](http://WWW.HOMEMCR.ORG) FOR FULL  
DETAILS AND TO BOOK.





IN TIME,  
NO ONE WILL REMEMBER OUR WORK  
OUR LIFE WILL PASS LIKE THE TRACES OF A CLOUD  
AND BE SCATTERED LIKE  
MIST THAT IS CHASED BY THE  
RAYS OF THE SUN  
FOR OUR TIME IS THE PASSING OF A SHADOW  
AND OUR LIVES WILL RUN LIKE  
SPARKS THROUGH THE STUBBLE. I PLACE A  
DELPHINIUM, BLUE, UPON YOUR GRAVE

JARMAN'S MONOLOGUE IN THE FILM *BLUE*, 1993